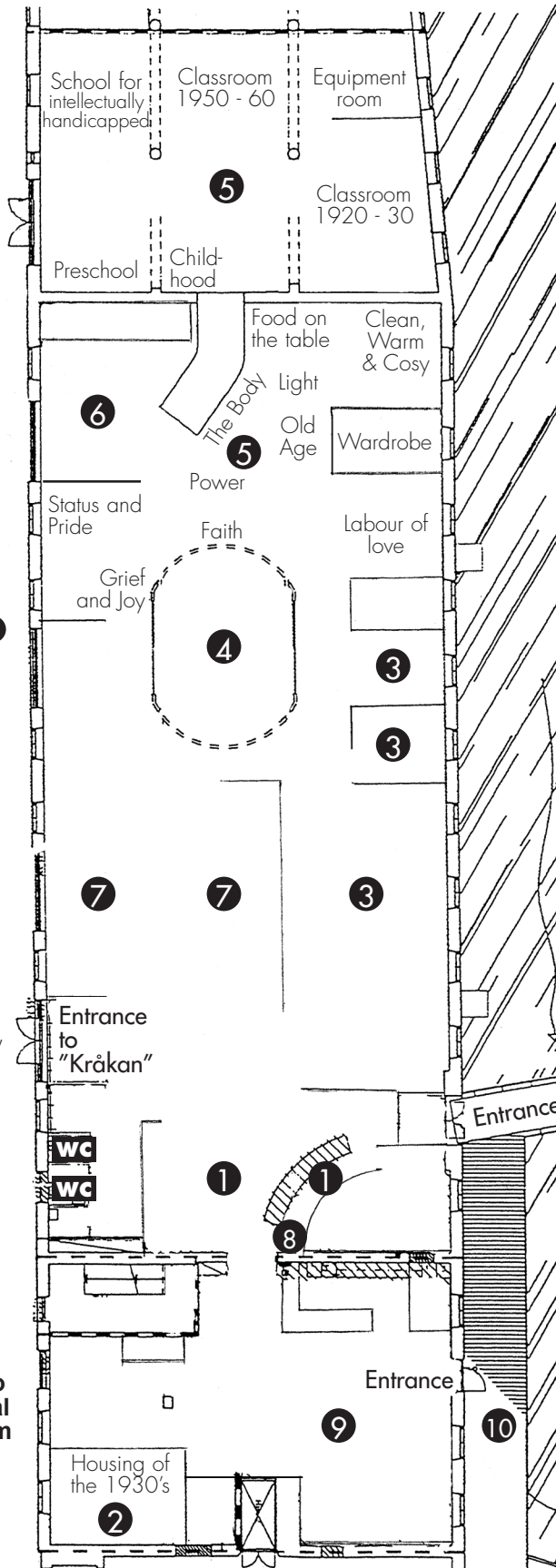


# MÖLNDALS MUSEUM

## ENGLISH

- 1 Reception/Gift Shop
- 2 Housing of the 1930's  
Reconstructed worker's home.
- 3 Lindome Furniture - local carpentry tradition
- 4 The Oval - film & projection room
- 5 The Open Storage  
Let the memories flow, and take a moment to ponder what our items mean to us. By using different themes, the museum showcases its collections. The public computers contains our databases in Swedish.
- 6 The Library
- 7 Temporary Exhibitions
- 8 The Digital Guide - for rent in the Reception 1  
Equipped with a handheld computer, you can take a digital tour of Kvarnbyn. As you walk in your own pace, the facts and stories will come to you automatically through sound, pictures and animations.
- 9 Café
- 10 Viewpoint of the dramatic rapids
- 11 Mölndals Kvarnby (The Mill Village)  
The Mill Village is a National Heritage. The rapids, the dramatic industrial environment and its idyllic residential areas; Mölndals Kvarnby, "The Mill Village", is a remarkable place.



Mölndals Kvarnby

11



### MÖLNDALS MUSEUM

Kvarnbygatan 12, 431 82 Mölndal  
Tel: 031-315 16 50  
Fax: 031-315 16 59  
www.museum.molndal.se  
museum@molndal.se  
Opening hours: tuesday-sunday 12-16

### FREE PARKING

Free parking is available at Grevedämmets fritidsgård. To get there, drive towards Pixbo and take the first turn, after about 500 meters, to the left.